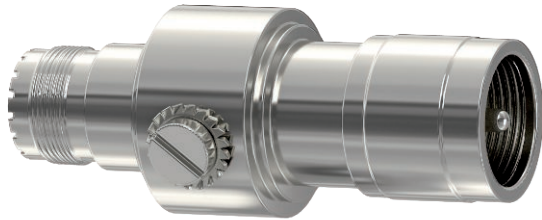


Technical data sheet

Coaxial protection devices for S-UHF connection:
male/female
Item no. 5093023

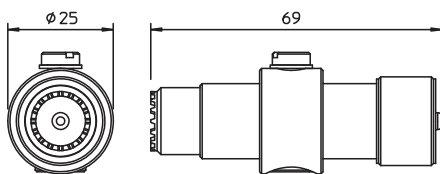


Coaxial data cable protection devices

- Basic protection
- High pulsed current carrying capacity 2 x 2.5 kA (10/350 µs)
- Simple installation (adapter plug), m = male/f = female connector
- Various plug combinations
- With UHF connector
- Optimised transmission behaviour
- Including OBO M25 Quick clip for simple installation



Dimensions



Master data

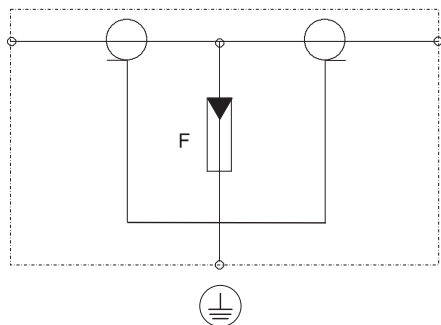
Item no.	5093023
Type	S-UHF M/W
Description 1	Protective device
Description 2	for high-frequency cables
Dimension	130V
Smallest sales unit (VG)	1,00 Piece
Weight	7,00 kg/100 pc.

Technical data sheet

Coaxial protection devices for S-UHF connection:
male/female
Item no. 5093023



Technical data



Arrestor monitoring	<input type="checkbox"/>
Category	Type 1+2 / D1+C2
SPD to IEC 61643-21	Class I+II / D1+C2
Number of poles	1,00
Insertion loss	≤0,2 dB
Explosion-tested version	<input type="checkbox"/>
Telecommunications contact	<input type="checkbox"/>
Total discharge current (8/20)	10 kA
Total discharge current (10/350)	5 kA
Frequency range	0 - 1,3 GHz
Frequency range	0,00 - 1.300,00 MHz
Cut-off frequency	1.300,00 MHz
Maximum continuous voltage AC	130,00 V
Maximum continuous voltage DC	185,00 V
Insulation resistance	>1 GΩ
Impulse discharge current (10/350)	2,50 kA
Capacity (wire-wire)	<10 pF
Capacity (wire-earth)	<20 pF
Lightning protection zone LPZ	0→2
Rated current	10,00 A
Nominal load current AC	7,00 A
Nominal load current DC	10,00 A
Installation type	Connector/cable adapter
Testing standard	IEC 61643-21
Return loss	≥14 dB
Shielding connection available	Yes
Shield connection	Direct
Protection rating	IP40
Protection level	<800 V
Protection level wire-wire	<800 V
Protection level wire-earth	<800 V
Signalling on device	None
Connection system	UHF
Impulse durability wire-wire	C2: 10 kV / 5 kA (8/20μs)
Impulse durability wire-earth	C2: 10 kV / 5 kA (8/20μs)
Temperature range	-40+80 °C
Wave resistance	50 Ω